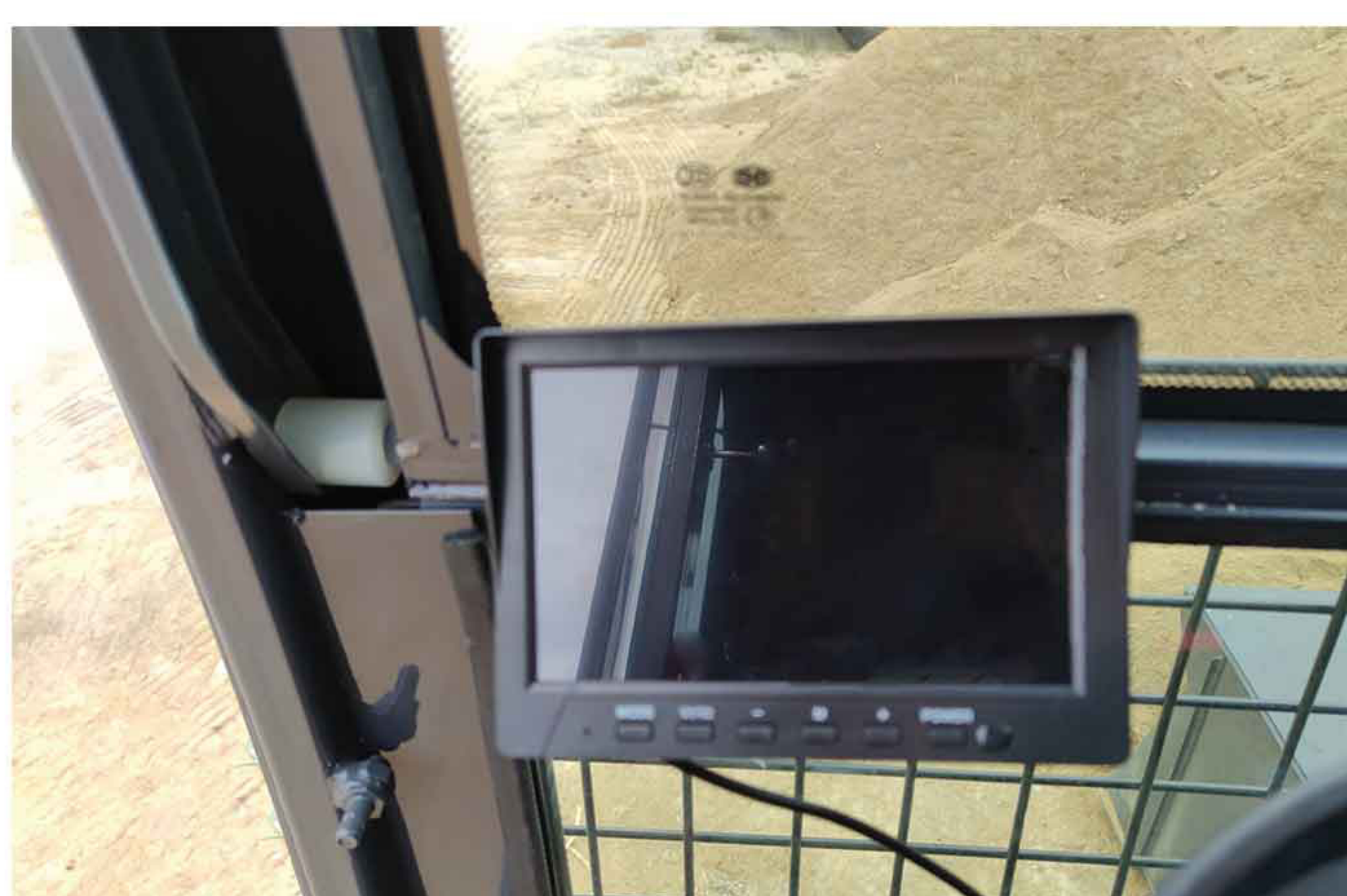
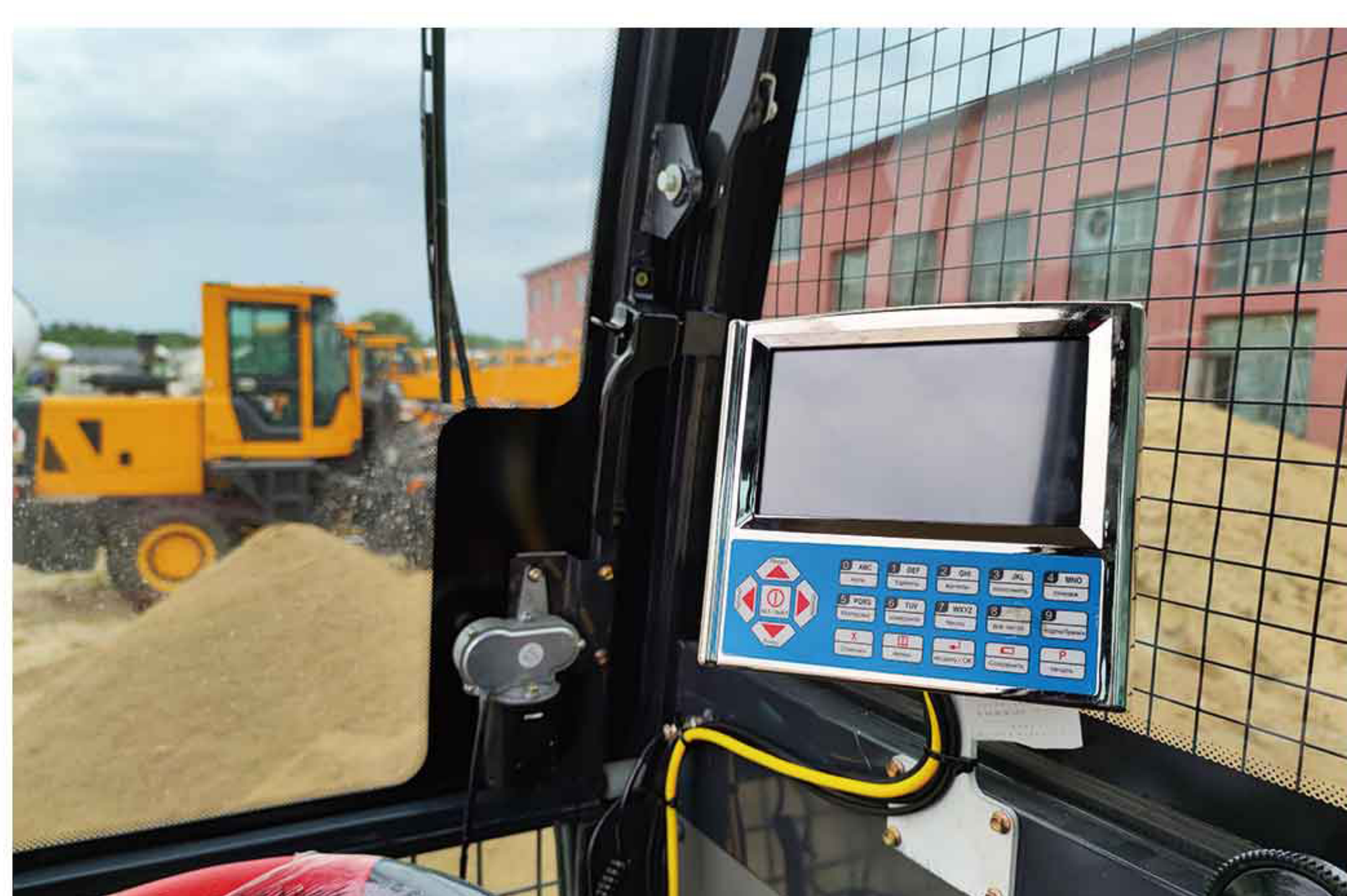


## SELF LOADING CONCRETE MIXER TRUCK - 自上料搅拌车



Model	SLM1.8	SLM2.6	SLM3.5	SLM4
Feeding Capacity 进料容量	2,680 L	3,580 L	4,740 L	6,000 L
Discharging Capacity 出料容量	1.8 m <sup>3</sup>	2.6 m <sup>3</sup>	3.5 m <sup>3</sup>	4 m <sup>3</sup>
Productivity 生产能力	7.2 m <sup>3</sup> /h	10.4 m <sup>3</sup> /h	14 m <sup>3</sup> /h	16 m <sup>3</sup> /h
Drum Rotation Angle 罐体旋转角度	270°	270°	270°	270°
Diesel Engine Brand 柴油机品牌	Yuchai	Yuchai	Yuchai	Yuchai
Diesel Engine Power 柴油机功率	78 kw	78 kw	85 kw	91 kw
Min. Turning Radius 最小转弯半径	5,270 mm	5,300 mm	5,300 mm	4,800 mm
Max. Travelling Speed 最大行走速度	30 km/h	30 km/h	30 km/h	35 km/h
Grade Ability 爬坡能力	30°	30°	30°	45°
Overall Size (L*W*H) 外形尺寸(长*宽*高)	7,300*2,650*3,750 mm	7,860*2,750*4,100 mm	7,830*2,680*4,170 mm	7,640*2,870*4,750 mm
Total Weight 总重量	5,900 kg	6,500 kg	7,500 kg	9,000 kg

01

**ZHENHENG** 振恒机械  
CONCRETE MACHINERY

 ZHENGZHOU ZHENHENG CONSTRUCTION EQUIPMENT CO., LTD  
 郑州市振恒建筑工程设备有限公司

## CONCRETE MIXER DRUM / TRUCK - 搅拌罐/车



Item	Concrete Mixer Drum	Mini Concrete Mixer Truck	Concrete Mixer Truck
Drum Volume 罐体容积	1.5~16 m <sup>3</sup>	2~3 m <sup>3</sup>	3.5~16 m <sup>3</sup>
Feeding Rate 进料率	≥2 m <sup>3</sup> /min	≥2 m <sup>3</sup> /min	≥2 m <sup>3</sup> /min
Discharging Rate 卸料率	≥3 m <sup>3</sup> /min	≥3 m <sup>3</sup> /min	≥3 m <sup>3</sup> /min
Residual Rate 剩余率	≤0.4%	≤0.4%	≤0.4%
Chassis Brand 底盘	/	Wuzheng/Foton	Foton/Dongfeng/Howo/Isuzu